

DESCRIPTION

TUBE is Ksix's first smartwatch with a rectangular design that breaks with everything established to date. Its multiple functions, both health, leisure and sport, position it as a product that exceeds all expectations.

A unique display

One of the secrets of this great smartwatch lies in its 1.57" rectangular multi-touch screen. This unique screen design allows it to fit any wrist in the best possible way. In addition, it has more than enough space to manage its multiple functionalities.

Monitor your health 24 hours a day

TUBE is much more than a watch. It is a great ally to monitor the health of our heart and keep in touch with our vital signs. Through it you can measure your heart rate, monitor your sleep and even do breathing exercises. In addition, it incorporates menstrual cycle monitoring that includes different warnings and alerts at different times of the period.

Receive and make calls

Say goodbye to holding your phone to receive or make calls. With TUBE smartwatch you can manage your calls anytime, anywhere. You'll also receive alerts and notifications from your favourite apps.

Activate your body and mind

Thanks to its multi-sport mode, movement reminder and features such as the pedometer, TUBE is designed to be constantly active. In addition, its IP67 protection allows it to be submerged up to 1 metre for 30 minutes so it can even be used underwater.

A lot of fun

This smartwatch offers up to 7 days of battery life so you can enjoy it 24/7. Play your favourite songs from your favourite platforms and discover the many extras offered by its own VFit app. You can also synchronise your alarms and calendar!

Product information

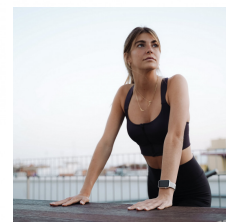
Smartwatch case: 46 mm high x 32 mm wide x 12 mm thick. Material: aluminum alloy

Smartwatch screen: 1.57" Multi-touch, dimensions 25 mm high x 40 mm wide. Material: Asahi Glass

Smartwatch strap: 23,3 cm length (including smartwatch case) x 20 mm wide. Material: silicone. Removable straps for easy cleaning (interchangeable straps not available)

Wrist closure range: The size of the removable Tube straps is standard offering a closure range of 5.5cm to 8cm wrist diameter. Not recommended for people with very small wrists, as this would make it difficult to calculate health data as the watch is not securely attached to the wrist.

In case of swimming in the sea or in a salt water pool, it is recommended to rinse the watch with fresh water after immersion due to the corrosive effect of salt



water.

TECHNICAL SPECIFICATIONS.

Color	Gray
Connectivity	Bluetooth 5.0 + BLE 4.0
Compatibility	Android 4.4 / iOS 8.0 and higher
Material	Aluminum alloy
Autonomy	Up to 7 days
Battery	180 mAh
Degree of protection	IP67
APP	Vfit
Display	1.57'' Multi-touch 200x320
Heart rate monitoring	Yes
Oxygen saturation	Yes
Screen shape	Rectangular
Sleep monitoring	Yes
Remote shutter	Yes
Alert	Yes
Charge	Magnetic
Anti-loss function	Yes
Phone calls	Yes (make and receive calls)
Alert	Yes
Stripes	Removable (interchangeable straps not available)
Speaker and microphone	Yes

STRENGTHS