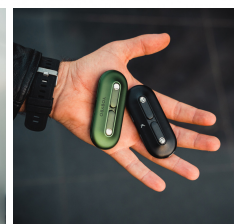
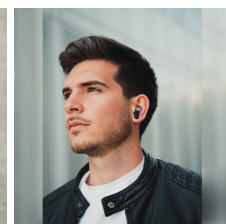
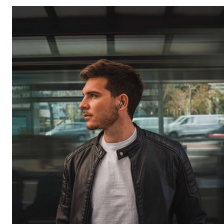


DESCRIPTION

Light as a leaf, with all the functionalities that make them Premium headphones. Leaf Bluetooth headphones combine a streamlined minimalist design with high-end sound quality. Their slim and metallic charging case allows them to be carried much more comfortably anywhere. Its battery lasts more than 4 hours and, charging them with the case, you can get up to 18 hours of playback. Innovative design The Leaf's metal charging case features a revolutionary design. Space and volume are optimized in a lightweight and compact case, with a minimalist design with curved shapes. The metallic colors create a sense of boldness and class at the same time. Therefore, Leaf are ideal for business calls, especially when traveling for work, them being that portable. Premium sound quality The clarity and audio quality of the Leaf headphones make it possible not to lose any nuance or detail during music playback or an important call, as well as watching a series or movie. They get a great sense of isolation to focus on the voice or instrument in question. Voice control By activating voice control it is possible to speak with the personal assistant (Google Assistant or Siri) without removing the mobile from your pocket. Music control and call management Thanks to the multi-function touch system, it is possible to control the playlist and answer calls with a single touch. Bluetooth 5.0 The latest Bluetooth technology and therefore the most efficient. They connect with your mobile very easily and automatically, once the first pairing is



done. Technical characteristics Bluetooth version:
V 5.0 Profiles: HFP / HSP / A2DP / AVRCP
Headphone battery power: 35 mAh Battery power
of the charging case: 350mAh Charging port: USB-
C Charging case voltage: 4.5-5.5V Headphone
charging time: 1.5 h Case charging time: 1.5 h
Playback hours: 4-5 Charges with the case: 2.5
Impedance: 115 ± 3db / 32Ω Sensitivity: -90db
Operating distance with the mobile: 10 m

TECHNICAL SPECIFICATIONS.

Color	Black
Connectivity	Bluetooth 5.0
Product	Earphones Leaf Ksix
Bluetooth profiles	HSP, HFP, A2DP, AVRCP
Operating range	10 m
Autonomy	Up to 18 hours
Battery capacity	350 mAh
Charging time	1.5 hours
Impedance	32
Sensitivity	-90dB

STRENGTHS