

## DESCRIPTION

GLOBE smartwatch, with its 100% round display, fuses the latest trends with the most exquisite elegance. The most up-to-date, slim and elegant smartwatch from KSIX has arrived to surprise and delight.

### Designed for sport

Develop your physical and sporting skills to the maximum thanks to the multi-sport mode offered by GLOBE. Choose between the different options and monitor your sessions as accurately as possible, and you can even check your calories burned!

### Your health matters

GLOBE has been designed to monitor your health 24 hours a day. Its continuous monitoring allows you to measure your heart rate, your blood pressure, the amount of oxygen in your blood and much more. A way to take care of your health that starts from your wrist.

### An eye-catching design

Its round, extra-slim design with a 1.28" multi-touch screen and its sober and elegant colours offer a first-class watch at a unique price. A perfect choice to combine the most glamorous looks with the most alternative or sporty ones.

### Battery that lasts and lasts

Our watch can last up to 7 days in snooze mode, although with normal use the battery life is approximately 5 days. In case of intensive use, the battery life can be affected and reduced to 3 days. However, its charging time is only 2 hours!

The battery life parameters are not exact, as it depends on the use of the smartwatch. All these data are approximate.

### Ready to enjoy it

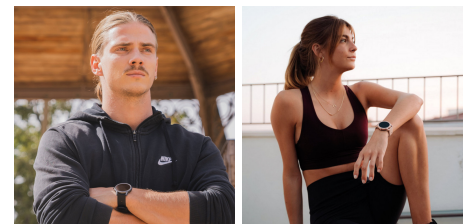
Control your phone's camera, play your favourite songs and receive notification alerts. GLOBE gives you the possibility to get as close as you need thanks to its Wireless connection that synchronises with the GloryFit app. It is also waterproof up to 1 metre underwater for 30 minutes.

### Product information

Smartwatch case: Ø43 mm wide x 9 mm thick. Material: zinc alloy with ABS+PC

Smartwatch screen: 1,28" Multitouch, dimensions Ø35 mm. Material: TFT (Thin Film Transistor)

Smartwatch Strap: 26 cm length (including smartwatch case) x 20 mm wide. Material: silicone. Removable straps for easy cleaning (interchangeable straps not available)



Wrist closure range: The size of Globe straps is standard offering a closure range of 6 cm to 8 cm wrist diameter. Not recommended for people with very small wrists, as this would make it difficult to calculate health data as the watch is not well attached to the wrist.

In case of swimming in the sea or in a salt water pool, it is recommended to rinse the watch with fresh water after immersion due to the corrosive effect of salt water.

## TECHNICAL SPECIFICATIONS.

Dimensions	<b>44.5 x 8.8 cm</b>
Color	<b>Gray</b>
Connectivity	<b>Wireless 5.0 compatible</b>
Compatibility	<b>Android 4.4 / iOS 8.0 and higher</b>
Material	<b>Zinc alloy with ABS+PC</b>
Autonomy	<b>Up to 5 days</b>
Battery	<b>160 mAh</b>
Degree of protection	<b>IP67</b>
APP	<b>Glory Fit</b>
Display	<b>1.28" Multi-touch 240x240</b>
Heart rate monitoring	<b>Yes</b>
Oxygen saturation	<b>Yes</b>
Screen shape	<b>Round</b>
Sleep monitoring	<b>Yes</b>
Remote shutter	<b>Yes</b>
Alert	<b>Yes</b>
Charge	<b>Magnetic</b>
Anti-loss function	<b>Yes</b>
Phone calls	<b>Notifications</b>
Alert	<b>Yes</b>
Straps	<b>Removable (interchangeable straps not available)</b>

## STRENGTHS



REF. BXSW12GN EAN: 8427542127248

Recommended retail price: €39.99