

# DESCRIPTION

## Refurbished state: Acceptable condition

- This product has been refurbished by professionals and has a 3-year warranty.
- The product is 100% safe and functional, all components have been checked by our technical support, registering its serial number.
- The product has been used and presents obvious wear signs, scratches and/or scuffs and some damaged components that have been replaced..
- The packaging may be damaged or may have been replaced by a generic one, but the state of the product is not affected by this in any case.
- Product pictures not contractual.

The Xiaomi Kingsmith X21 foldable connected treadmill has come to start the revolution in the world of sports and fitness. Your home or office can become the ultimate gym.

## With digital display

The Xiaomi Kingsmith WalkingPad X21 folding connected treadmill includes a high-resolution 1.27"" OLED digital display on the handrail so you can keep all your data under control and at a glance.

## The latest in NFC technology

Thanks to its NFC technology, transferring your workout data from the treadmill to your smartphone has never been easier. Bring your phone close and in 3 seconds you'll have it all in the palm of your hand.

## Maximum speed!

The Xiaomi Kingsmith treadmill includes different modes and levels to adapt your workout to your goals. It is capable of reaching between 0.5 and 12km/h. A professional option for your own gym, home or office.

## Ultra-quiet and compact

Thanks to its Brushless Motor, this bike is incredibly quiet. In addition, it folds using the innovative 180° + 90° system, so it occupies only 0.16m2. 84% less than other options on the market!

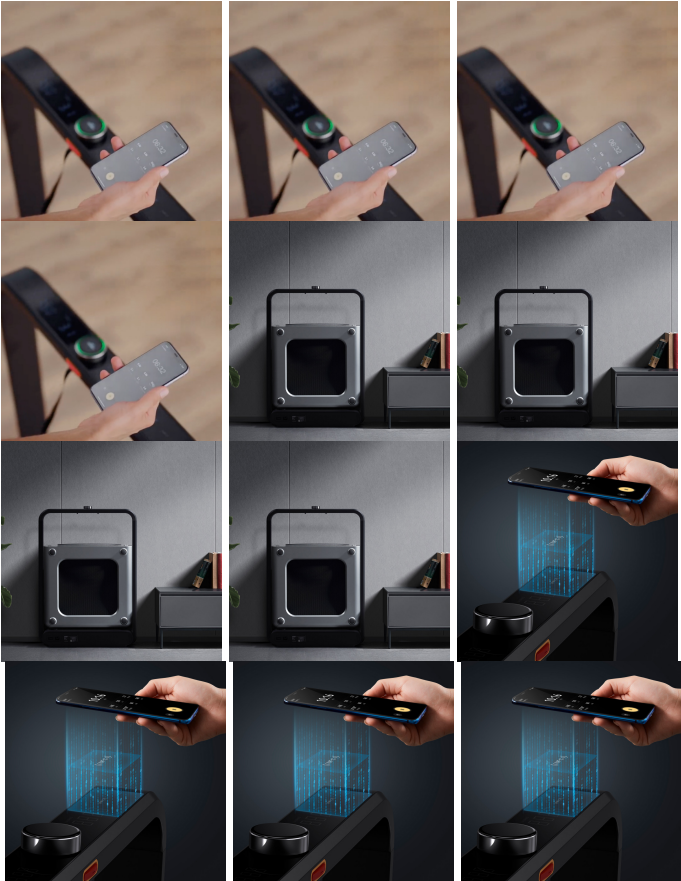
## Get the most out of your app

With our Walkingpad X21, you have all your workouts and routines always at hand. Download the KS Fit app and synchronize it with the treadmill to have all your progress at a glance - you're in control!

## Up to 3 hours of use per day

The Xiaomi Kingsmith treadmill will always keep up with you. Enjoy up to 3 hours of use per day or up to 21 hours per week and let nothing stand in your way - bring out your most avid runner!

Recommended use: Allow 10 minutes rest time for every 50 minutes of continuous use.



# TECHNICAL SPECIFICATIONS.

Weight	38 kg
Dimensions	100.7 x 71.1 x 22.5 cm

Color	Gray
Power	220-240V
APP	KS Fit
Shape	Premium
Display	OLED 1.27"
Noise	Silent
Storage	Foldable
Unfolded dimensions	142 x 71 x 105 cm
Speed ??range	1-12 km/h
Surface trodden	121 x 46 cm
Refurbished	Acceptable conditions

## STRENGTHS



REF. ORWKPX21-REA-4    **EAN:** 8427542130057

Recommended retail price: €719.20